



Connecting the iON Terminal to Wialon Hosting Platform

To connect the iON terminal to Wialon Hosting you need to do the following steps:

- 1 Start the configuration manager (**Conf_iRZ.exe**) for iON (the device must be connected).
- 2 Enter the Wialon service address for server 1 in the **Server** tab of the **Settings** menu:
IP or DNS mane of server #1: **193.193.165.165**
Server port #1: **20928**
- 3 Open the **Service** tab and enter the **SRV#1#KEY=Encryption_key** command in the Sending command field, where **Encryption_key** is a sequence of **16** Latin characters and digits to be used as a key to access Wialon Hosting, and click **Send**.

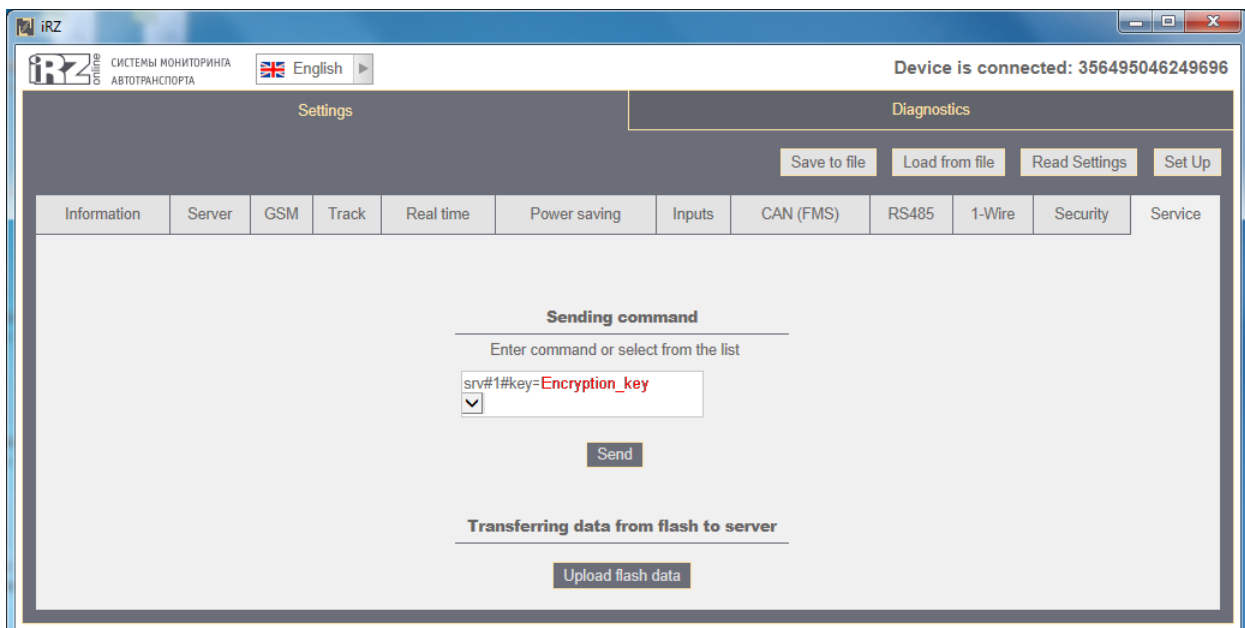


Fig. 1. The iON configuration manager

If done correctly, the following message displays:

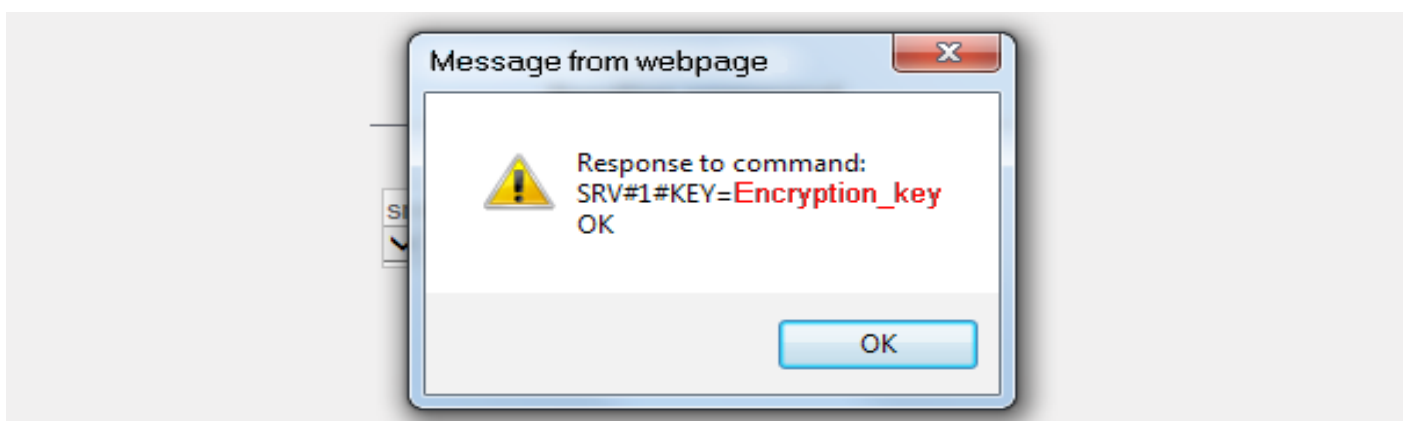



Fig. 2. The message on successful completion of the process




4 Navigate to **Unit Properties** in a personal account of Wialon Hosting, fill in the fields for **Name** (enter the device IMEI), **Device Type** (ION) and click the key icon  (opposite to **Device Type**).

Unit Properties - 356495046247260

General Access Icon Advanced Sensors Custom Fields Unit Groups Commands Eco Driving

Trip Detection Fuel Consumption Service Intervals

* Name: 356495046247260 from 4 to 50 characters

* Device type: ION  ION TMS Online ION ULC

Unique ID: 356495046247260

Phone number:

Device access password:

Creator: testtms

Account: testtms

Mileage counter: GPS Current value: 0 km Auto

Engine hours counter: Engine ignition sensor Current value: 0 h Auto

GPRS traffic counter: [Reset counter](#) Current value: 0 KB Auto

Cancel OK

Fig. 3. Wialon Hosting, Unit Properties



5 Enter the encryption key you specified in the iON configuration manager for the iON device in the **Parameter** value field, then click **OK**. Click **OK** to close the **Unit Properties** window.

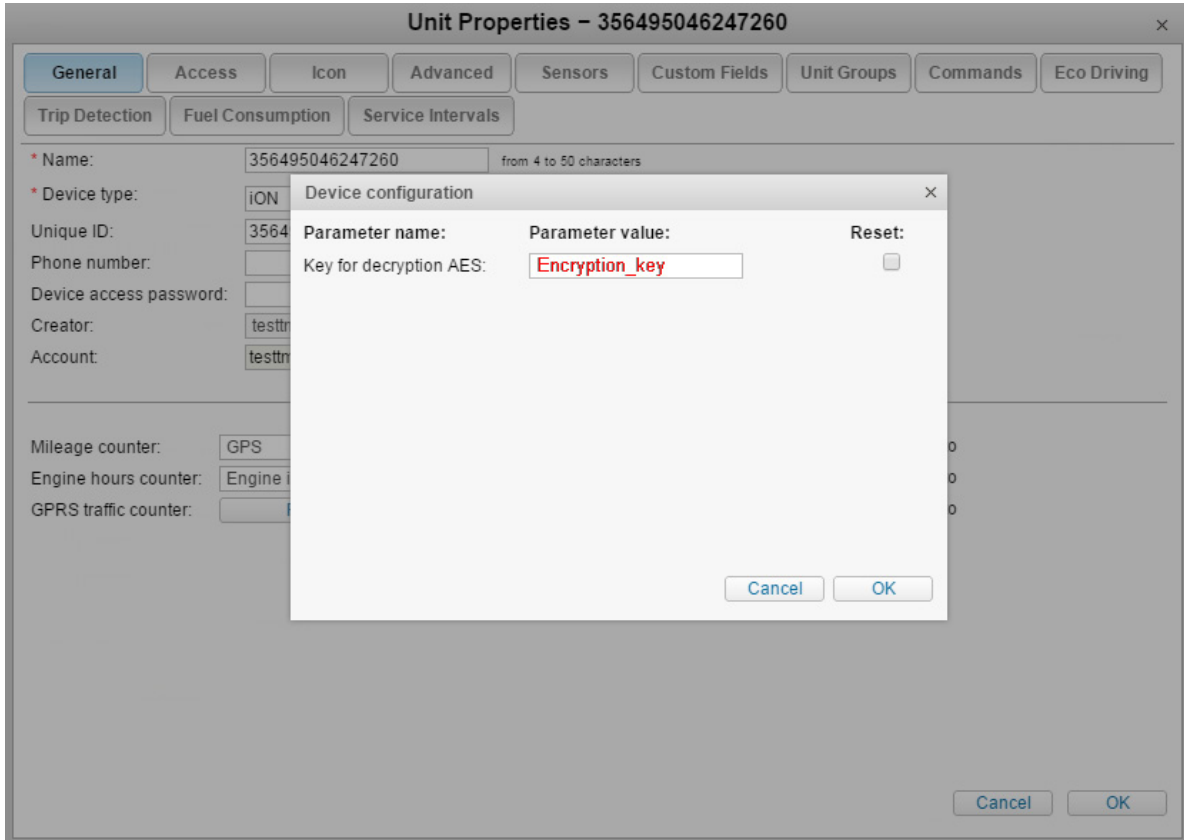


Fig. 4. Wialon Hosting, entering the encryption key